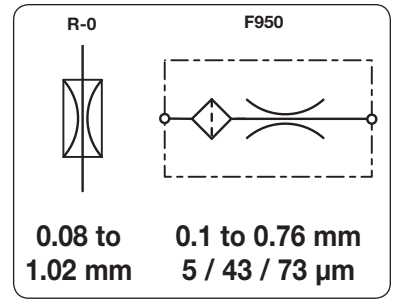


Precision Restrictor in Plastic Body

R-0/F950

Precision Restrictor R-0	
Description	Precision sapphire restrictor for reducing the flow of compressed air or non-corrosive gases
Medium	compressed air or non-corrosive gases
Filter element	5 µm for DN0.08 up to DN0.23, from DN0.25 on 100 µm
Operating pressure	vacuum up to max. 7 bar
Material	Body: polycarbonate, FDA-approved Restrictor: sapphire Filter element: stainless steel fabric
Temperature range	5 °C to 50 °C / 41 °F to 122 °F
Restrictor with Filter F950	
Description	Disposable in-line-filter with Dutch weave screen of 304 stainless steel. Flow direction and filter size in µm are clearly marked. The colour indicates the nominal size.
Diameter tolerance	-3% to +10% of nominal diameter
Filter element	5 µm at DN 0.10 to DN 0.15, 43 µm at DN 0.18 to DN 0.41, 73 µm at DN 0.51 to DN 0.76
Operating pressure	max. 7 bar
Material	Body: polysulphone Restrictor: sapphire Filter element: stainless steel fabric
Temperature range	5 °C to 50 °C / 41 °F to 122 °F



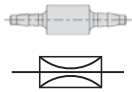
Dimensions	Connection	Nominal size	Order	Nominal size	Order
A	inlet / outlet	colour / DN	number	colour / DN	number
mm		Ø mm		Ø mm	

Restrictor, barbed fittings Ø 2.7

operating pressure max 7 bar

R-0...-6

30 fittings Ø 2.7	gold	0.08	R-003-6	orange	0.36	R-014-6
	purple	0.10	R-004-6*	grey	0.41	R-016-6*
	white	0.13	R-005-6	brown	0.43	R-017-6
	yellow	0.18	R-007-6	red	0.48	R-019-6
	light green	0.20	R-008-6*	dark blue	0.51	R-020-6*
	lavender	0.23	R-009-6	black	0.64	R-025-6
	light blue	0.25	R-010-6	beige	0.76	R-030-6
	green	0.30	R-012-6*	dark grey	0.89	R-035-6*
				cyan	1.02	R-040-6*



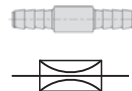
R-0...-1 R-0...-6
with nipple

Restrictor, barbed fittings Ø 4,7

operating pressure max 7 bar

R-0...-1

34 fittings Ø 4.7	gold	0.08	R-003-1	orange	0.36	R-014-1
	purple	0.10	R-004-1*	grey	0.41	R-016-1*
	white	0.13	R-005-1	brown	0.43	R-017-1
	yellow	0.18	R-007-1	red	0.48	R-019-1
	light green	0.20	R-008-1*	dark blue	0.51	R-020-1*
	lavender	0.23	R-009-1	black	0.64	R-025-1
	light blue	0.25	R-010-1	beige	0.76	R-030-1
	green	0.30	R-012-1*	dark grey	0.89	R-035-1*
				cyan	1.02	R-040-1*



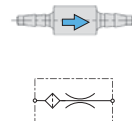
R-0...-0
with plain fittings

Restrictor with filter

operating pressure max. 7 bar
nipple Ø 2.7 mm, 5/43/73 µm

F950

34 fittings Ø 2.7	purple	0.10	5 µm	F950- 5-041-B80*
	light green	0.13	5 µm	F950- 5-050-B80
	red	0.15	5 µm	F950- 5-051-B80
	cyan	0.18	43 µm	F950-43-071-B80*
	yellow	0.25	43 µm	F950-43-101-B80
	black	0.30	43 µm	F950-43-121-B80*
	grey	0.41	43 µm	F950-43-161-B80
	blue	0.51	73 µm	F950-73-201-B80*
	brown	0.64	73 µm	F950-73-251-B80
	beige	0.76	73 µm	F950-73-301-B80*

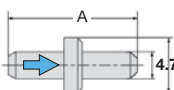


F950...B85/ ... B80
with filter

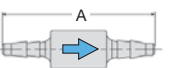
Supply pressure

Special options, add the appropriate letter

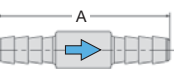
plain fittings Ø 2.3	A = 9,9 mm		for R-0	R-0...-0
nipple Ø 4.7	A = 34 mm		for F950	F950-...-...-B85



plain fittings
R-0...-0



barbed fittings Ø 2.7
R-0...-6
F950-...-...-B80



barbed fittings Ø 4.7
R-0...-1
F950-...-...-B85

* preferred stock items

*1 nominal size see RF2

